

Microsoft Dynamics NAV 2015

What's new?

A Business solution from Microsoft – That is quick to implement, easy to use and has the power to support SMB ambition

Quick to implement

RapidStart Upgrade – Code
RapidStart Upgrade – Data
RapidStart Implementation

Easy to use

Tablet Experience
User Experience enhancements
Simplification
Office 365 Integration
Document Reporting

Power to support

Cash Management
Microsoft Social Listening
Power BI



What's new in *Microsoft Dynamics NAV 2015*

RapidStart Upgrade

Microsoft Dynamics NAV 2015 includes several enhancements for upgrading solutions.

RapidStart Upgrade - Code

New application merge utilities help partners upgrade their solution - application code and metadata - from one version to another, or from one cumulative update to another. We also introduce supporting tools for handling application object files in general, and for managing application languages and captions.

RapidStart Upgrade - Data

We have introduced a new way of running the data upgrade logic. The data upgrade was enhanced significantly to optimize the performance and provide developers with a superior tool for testing, automating, tracking progress, troubleshooting and running of the data upgrade code.

With schema synchronization on demand, the data upgrade becomes a much more controllable process. The development environment has been extended so that you can now choose how to sync each change in a table.

The data upgrade in Microsoft Dynamics NAV 2015 allows you to catch all the errors, but also to resume after an error. At the same time you get a detailed overview of the progress of the data upgrade

Supporting documentation

Why Use Application Merge Utilities in Microsoft Dynamics NAV 2015



What is Application Merge Utilities and How to Handle Captions and Languages in NAV 2015



What is Application Merge Utilities in Microsoft Dynamics NAV 2015



What is Exporting and Importing Data Using Microsoft Dynamics NAV 2015



What is Merge Application Object Source Files in Microsoft Dynamics NAV



What is Schema Synchronization in Microsoft Dynamics NAV 2015



What is Data Upgrade in Microsoft Dynamics NAV 2015



How to Demo: Get Started with Application Merge Utilities in Microsoft Dynamics NAV 2015



How to Demo: Handling Captions and Translation Files Using Application Merge Utilities in Microsoft Dynamics NAV 2015



How to Demo: Compile Using the Development Shell in Microsoft Dynamics NAV 2015



How to Demo: Merge Version List Using the Application Merge Utilities in Microsoft Dynamics NAV 2015



How to Demo: Handle Application Object Properties Using Application Merge Utilities in Microsoft Dynamics NAV 2015



How to Demo: Handle Documentation Trigger Conflicts Using Application Merge Utilities



How to Demo: Use the Application Merge Utilities in Microsoft Dynamics NAV 2015



How Do I Use Schema Synchronization in Microsoft Dynamics NAV 2015



How Do I Get Started with Application Merge Utilities in Microsoft Dynamics NAV 2015



How Do I Handle Captions and Translation Files Using Application Merge Utilities in Microsoft Dynamics NAV 2015



How Do I Compile Using the Development Shell in Microsoft Dynamics NAV 2015



How Do I Handle Application Object Properties Using Application Merge Utilities in Microsoft Dynamics NAV 2015



How Do I Handle Documentation Trigger Conflicts Using Application Merge Utilities in Microsoft Dynamics NAV 2015



How Do I Merge Version List Using the Application Merge Utilities in Microsoft Dynamics NAV 2015



How to Demo: Merge Version Lists Using the Development Shell in Microsoft Dynamics NAV 2015



How Do I Work with Schema Synchronization in Microsoft Dynamics NAV 2015



How to Demo: Data Upgrade in Microsoft Dynamics NAV 2015



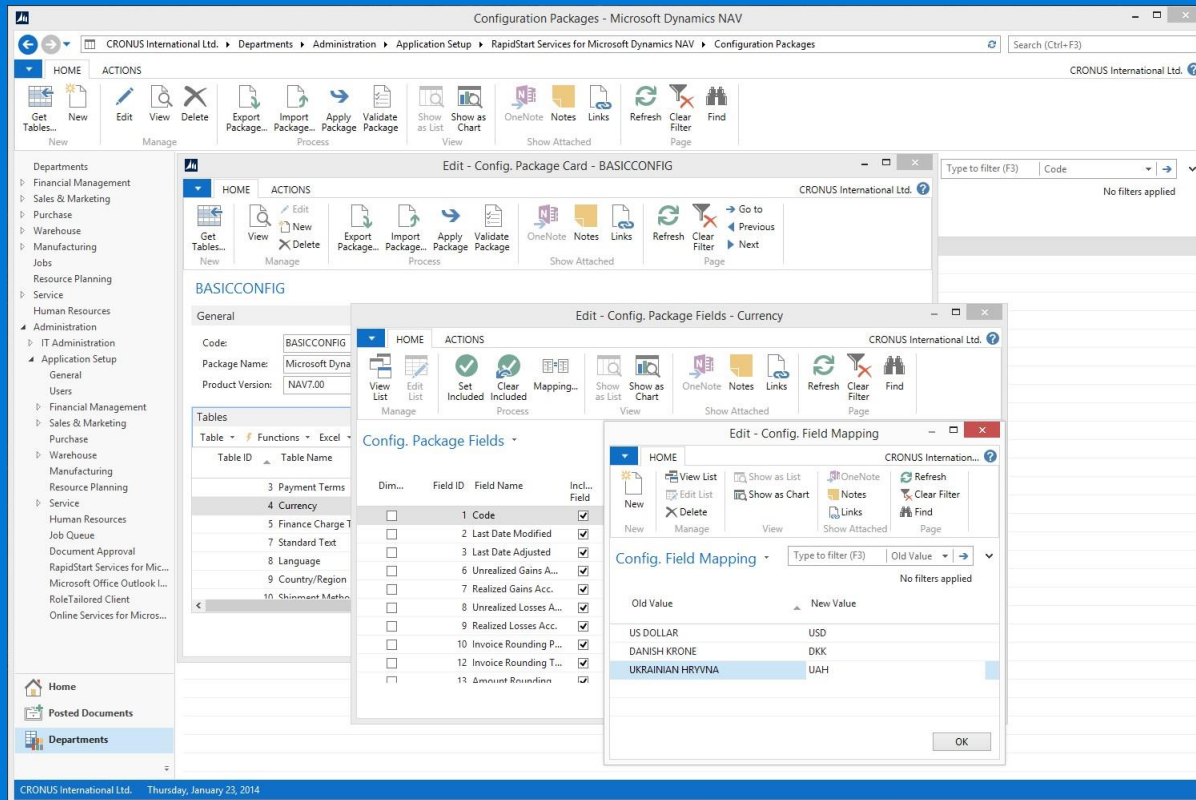
What's new in *Microsoft Dynamics NAV 2015*

RapidStart Implementation

RapidStart Services helps meet the needs of Microsoft partners responsible for creating, setting up, and initializing new installations of Microsoft Dynamics NAV.

This release offers the possibility to map values from an existing ERP system into your Microsoft Dynamics NAV implementation during the migration of your customer's data.

In addition, tool support is provided to help you clean up and process the data that you want to import. For example, you can easily convert dates and decimals to the format required by the regional settings on a user's computer



What's new in *Microsoft Dynamics NAV 2015*

Microsoft Dynamics NAV for Tablets

Dynamics NAV for tablets allows users in small and midsize businesses to get access to the data they need from the device they prefer. With a fresh and modern interface designed exclusively for touch, it provides the familiar RoleTailored experience so that users can get real work done at home, at work or on the go.

Dynamics NAV for tablets leverages the complete Microsoft Dynamics NAV architecture and investments you've already made. Customizing and role-tailoring your customer's tablet experience becomes a simple task, using the Microsoft Dynamics NAV Development Environment and the Tablet client running in the browser.

Download and install the app today from the Windows Store, App Store or Google Play and connect to your Dynamics NAV 2015 Server.

Supporting documentation

Why Use Microsoft Dynamics NAV 2015 for Tablets



How to Demo: All you Need to Know About Developing for Microsoft Dynamics NAV fro Tablets in 90 seconds



How to Demo: Create Application pages for the Tablet client in Microsoft Dynamics NAV 2015



How to Demo: Design for Users who Use Both Tablet and Desktop in Microsoft Dynamics NAV 2015



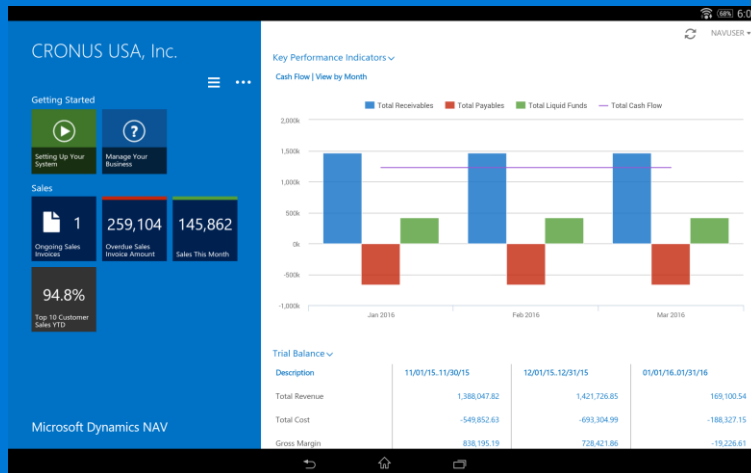
How to Demo: Add Help to my Dynamics NAV Tablet Client app



How Do I Create Application Pages for the Tablet Client in Microsoft Dynamics NAV 2015 (V)



How to Demo: All you Need to Know About Developing for Microsoft Dynamics NAV fro Tablets in 90 seconds



20000 - Selangorian Ltd.

Sales History

0 1 0

Ongoing Sales Quotes

Ongoing Sales Invoices

Ongoing Sales Credit Memos

Printed Sales Invoices

Printed Sales Credit Memos

EDIT - CUSTOMER CARD

Customer

No. 20000

Name Selangorian Ltd.

Blocked

Last Date Modified 8/22/2014

Address & Contact

Address 153 Thomas Drive

Address 2

State / ZIP Code IL

ZIP Code 61236

City Chicago

Country/Region Code US

Invoicing

Credit Limit (\$) 0.00

POSTING DETAILS

Bill-to Customer No.

Prices and Discounts

Customer Price Group

Customer Disc. Group RETAIL

Allow Line Disc.

NEW - SALES INVOICE - 1005 SELANGORIAN LTD.

Due Date 2/11/2016

Lines

Item No.	Description/Comment	Quantity	Unit Price Excl. Tax	Line Amount Excl. Tax	Amount Including Tax
1000	Bicycle	1	4,000.00	4,000.00	3,880.00
1001	Touring Bicycle	2	4,000.00	7,200.00	6,984.00

Invoice Discount Amount 336.00 Total Excl. Tax (USD) 10,864.00

Customer Invoice Discoun... 3 Total Tax (USD) 0.00

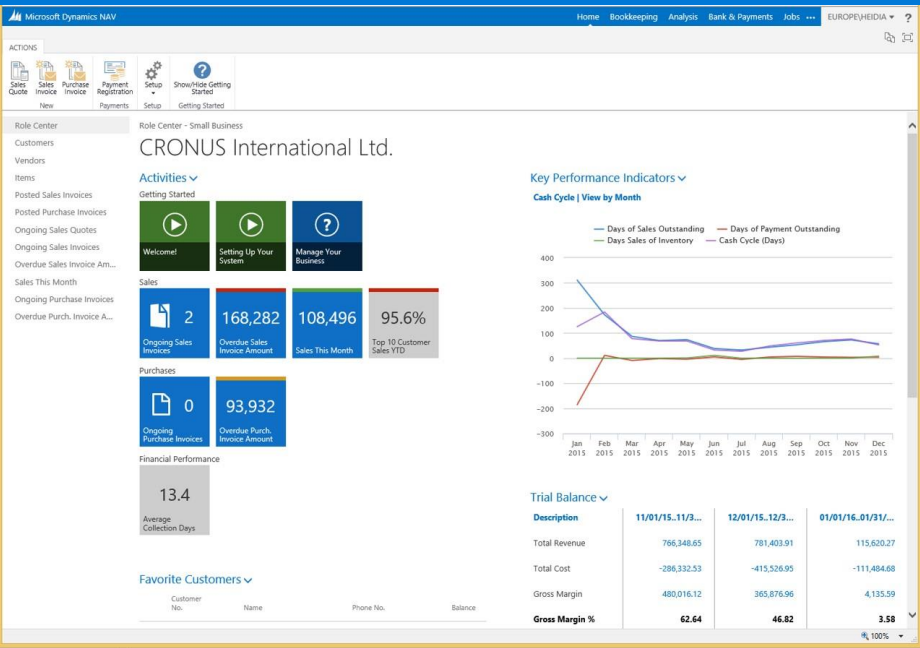
Total Incl. Tax (USD) 10,864.00

What's new in Microsoft Dynamics NAV 2015

User Experience enhancements

Making Microsoft Dynamics NAV more intuitive for the end-user by making data entry on pages faster by showing mandatory input fields (Mandatory Fields). Faster processing by automatically filling in document numbers (Auto-fill No. field). Easier review of documents such as orders, invoices and credit memos by having totals shown on the page (Total section on document pages). Increased productivity by only showing what is relevant to the user, depending on users permission sets and license (UI Elements Removal).

To present striking operational BI dashboards, that improves decision making and focused actions the Role Center now can show special cue tiles that apply custom formatting to any computed numerical value. It can also show an indicator that changes color based on the data values that the tile reflects (Enhanced Cues).



Supporting documentation

Why use Enhanced Cues?



What is the enhanced cue functionality



How to Demo: Remove UI in Microsoft Dynamics NAV 2015



How to Demo: Simplified UX - Basic Concepts in Microsoft Dynamics NAV 2015



Coming soon:
How Do I Simplify UX - Basic Concepts in Microsoft Dynamics NAV 2015



Coming soon:
How to Demo: Expressive Tiles



How to Demo: UI Elements Removal in Microsoft Dynamics NAV

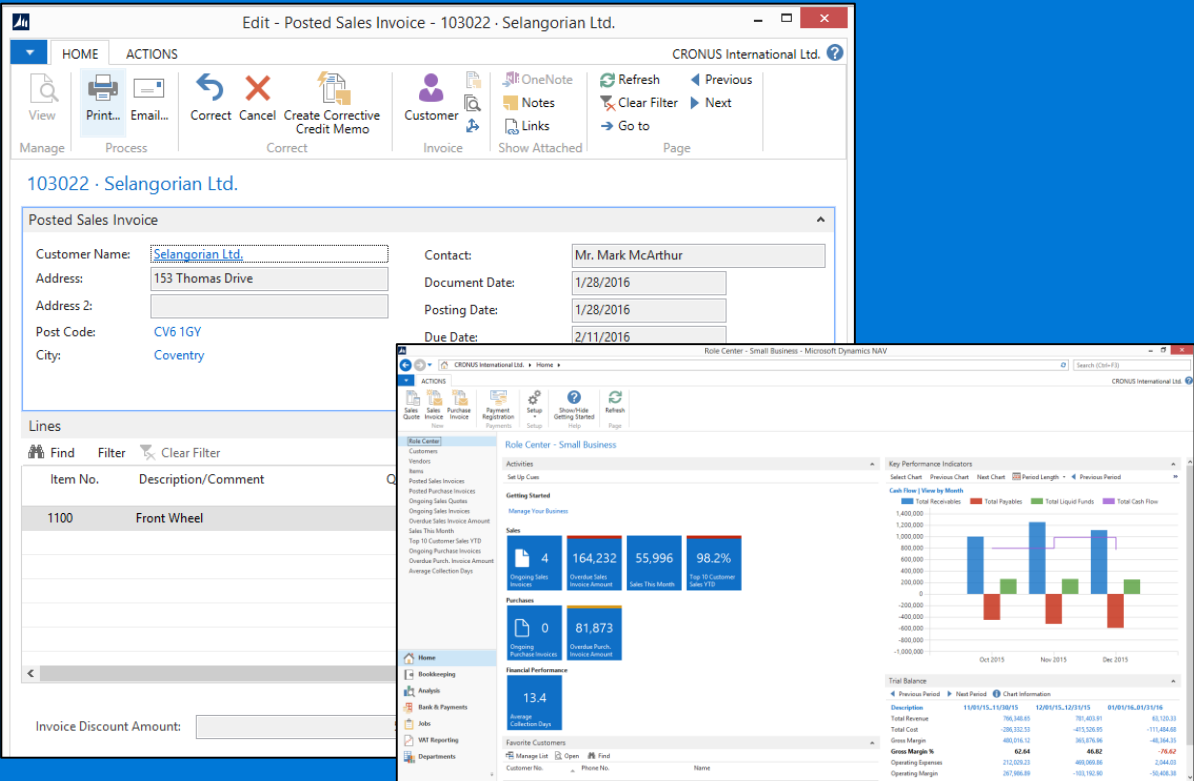


What's new in Microsoft Dynamics NAV 2015

Simplification

Simplification is a foundation for building solutions with a simpler user experience which focus on basic sales and purchase scenarios for small business solutions.

It consists out of a set of ~100 objects including 60+ pages that have been simplified plus one new Role Center for small business. These pages have been localized for each supported market, and the underlying tables are the standard Microsoft Dynamics NAV tables.



Why Use Simplified UX I in Microsoft Dynamics NAV 2015



Why Use Simplified UX II in Microsoft Dynamics NAV 2015



What is Application Simplifications in Microsoft Dynamics NAV 2015



What is Simplified UX in Microsoft Dynamics NAV



How to Perform Simplified UX in Microsoft Dynamics NAV 2015



How to Demo: Application Simplifications in Microsoft Dynamics NAV



Coming soon: How to Demo: Mandatory fields, Auto-filled No, and Totals on Documents in NAV 2015



How to Demo: Refresh Parent UpdatePropagation in Microsoft Dynamics NAV 2015



How to Demo: Create a Sales Invoice From a Sales Quote in Microsoft Dynamics NAV 2015



How to Demo: Set Basic Concepts in Microsoft Dynamics NAV 2015



How to Demo: Create Purchase Invoices and Purchase Credit Memos in Microsoft Dynamics NAV 2015



How to Demo: Create a Credit Memo for a Customer in Microsoft Dynamics NAV 2015



How to Demo: Create Items And Customers From Templates in Microsoft Dynamics NAV 2015



How to Demo: Set Key Performance Indicators in Microsoft Dynamics NAV 2015



How to Demo: Set Sales Prices and Discounts For an Item in Microsoft Dynamics NAV 2015



How to Demo: Use Setup Pages in Microsoft Dynamics NAV 2015



What's new in *Microsoft Dynamics NAV 2015*

Office 365 integration

Microsoft Dynamics NAV provides interoperability with Office 365, which enables customers to drill down, analyze, share and collaborate with peers. And with new usability enhancements that make their solution easier and more familiar to use, customers will enjoy working seamlessly and effortlessly across all applications..

In Microsoft Dynamics NAV 2015 we continued investing in the integration with Office 365 by supporting:

- Simplified email messaging via SMTP including Office 365
- Sign in to the Microsoft Dynamics NAV Windows client using your Office 365 account

Supporting documentation

Why Use OAuth Support on Web Services in Microsoft Dynamics NAV 2015



What is OAuth on Web Service Endpoints in Microsoft Dynamics NAV 2015



How to Perform Simplified Email with a Report Attachment in Microsoft Dynamics NAV 2015



How to Use the Custom Profile Parameter in Microsoft Dynamics NAV 2015



Coming soon:
How to Demo: Quick Start - Single Sign-on in Microsoft Dynamics NAV



How to Demo: Refresh Parent with UpdatePropagation



How to Demo: Simplified Email with a Report Attachment in Microsoft Dynamics NAV 2015



Coming soon:
How Do I Refresh Parent with UpdatePropagation in Microsoft Dynamics NAV 2015



Coming soon:
How Do I Use PowerShell and Windows Azure Active Directory Allowing Single Sign on for Windows Client



What's new in *Microsoft Dynamics NAV 2015*

Document Reporting

We are introducing Microsoft Word as a layout editing option for document reports. A single report can now have many layouts, either RDLC, Word, or both. In a scenario where you are running multiple customers in a multitenant setup you can have as many tenant-specific customizations as needed, stored in the business data database. End users can control which layout for a given report in a solution is the active one.

Report Scheduling

You can schedule any report to run on the server, now or scheduled later. Reports will be bundled in a repository in your Role Center.

CRONUS INTERNATIONAL LTD.

25 January 2015

INVOICE 103001

Bill To		Ship To	
Customer	The Cronus Group PLC Mr. Andy Teal	Recipient	The Cronus Group PLC Mr. Andy Teal
Address	102 Market Square Birmingham, B27 4ET Great Britain	Address	102 Market Square Birmingham, B27 4ET Great Britain
Customer EMail	10200		
Payment Due	25 February 2015	Shipping Method	Ex Warehouse
Payment Terms	1 Month/2% 9 days	Subperson	Peter Subbow

Qty	Unit	Description	Unit Price	Discount	Line Total
25	TRMCTHY	Assembling Furniture, January	54.00	0	1,350.00
120	TRMCTHY	Assembling Furniture, January	54.00	0	6,480.00
Subtotal					7,830.00
Invoice Discount					-391.50
Total GBP Excl. VAT					7,438.50
10% VAT					743.85
Total GBP Incl. VAT					8,182.35

Thank you for your business!

CRONUS International Ltd.
5 The Ring, Westminster, W2 8HG London
p: 0800-695-0800

Invoice: 103001
25 January 2015

CRONUS International Ltd.
5 The Ring
Westminster
W2 8HG London

Phone: 0800-695-0800

TO:
The Cronus Group PLC
Mr. Andy Teal
102 Market Square
Birmingham, B27 4ET
Great Britain

SHIP TO:
The Cronus Group PLC
Mr. Andy Teal
102 Market Square
Birmingham, B27 4ET
Great Britain

Sales Rep.	P.O. Number	Shipment Method	Payment Due	Payment Terms
Peter Subbow		Ex Warehouse	25 February 2015	1 Month/2% 9 days

Quantity	Description	Unit Price	Total
25	Assembling Furniture, January	54.00	1,350.00
120	Assembling Furniture, January	54.00	6,480.00
		Subtotal	7,830.00
		Invoice Discount	-391.50
		Total GBP Excl. VAT	7,438.50
		10% VAT	743.85
		Total GBP	8,182.35

Make all checks payable to CRONUS INTERNATIONAL LTD.
THANK YOU FOR YOUR BUSINESS!

Invoice 103001

CRONUS International Ltd. 

5 The Ring, Westminster, W2 8HG London

Date	To	Ship To
25 January 2015	The Cronus Group PLC Mr. Andy Teal 102 Market Square Birmingham, B27 4ET Great Britain	The Cronus Group PLC Mr. Andy Teal 102 Market Square Birmingham, B27 4ET Great Britain

Quantity	Description	Unit Price	Total
25	Assembling Furniture, January	54.00	1,350.00
120	Assembling Furniture, January	54.00	6,480.00
		Subtotal	7,830.00
		Invoice Discount	-391.50
		Total GBP Excl. VAT	7,438.50
		10% VAT	743.85
		Total GBP Incl. VAT	8,182.35

Thank you for your business!

Supporting documentation

Why Use Word
Document Reports
in Microsoft
Dynamics NAV 2015



How to Demo:
Report Layout
Refactoring



How to Demo:
Creating Word
Document Reports
and Customizing
Layouts



How to Demo:
Schedule Report
Execution



How Do I Manage
Report Layouts in
Microsoft Dynamics
NAV 2015



How Do I Customize
Word Layout in
Microsoft Dynamics
NAV 2015 - Simple
Formatting



How Do I Customize
Word Layout in
Microsoft Dynamics
NAV 2015 -
Advanced
Formatting



How Do I Create a
new Word Report
based on an Existing
Word Template in
Microsoft Dynamics
NAV 2015



How Do I Customize
a Custom RDLC
Report Layout in
Microsoft Dynamics
NAV 2015



What's new in *Microsoft Dynamics NAV 2015*

Cash Management

Microsoft Dynamics NAV 2015 delivers several Cash Management enhancements.

Bank integration - simple and uniform across borders

With the new Bank Data Conversion Service feature users get electronic bank statement files converted into data that can be imported into Microsoft Dynamics NAV. Reversely, users can also use the conversion service to export payment information to electronic payment files in the format that their bank requires. Microsoft Dynamics NAV 2015 supports electronic bank files of major banks in over 25 countries.

Incoming and outgoing bank payments – fast and reliable automatic registrations
A new feature called Payment Reconciliation Journals enables users to import bank transaction data into a dedicated UI and automatically apply to open entries representing customer and vendor documents. The features includes advanced record matching, strong review tools and the possibility to freely define the payment match tolerance and to modify the generic matching algorithm.

Create and Manage Electronic Payments – more information and better control

Improvements in the Payment Journal and the Credit Transfer Registers enable users to better manage the payment creation and export process and to track the payment history. Users that do not want to post payments until they have actually been processed at the bank can more efficiently control which open vendor documents to pay and avoid paying vendors wrongly or paying duplicate amounts. Also, the information about previous payment exports makes partial-payment scenarios easy to manage. Finally a new function allows users to create payments where posting date (execution date in the bank) is automatically calculated with point of departure in due date for the underlying documents.

Supporting documentation

Why Use Bank File Conversion in Microsoft Dynamics NAV 2015



Why Use Cash Management in Microsoft Dynamics NAV 2015



Why Use Payment Process and Bank Reconciliation Using Bank Data Conversation Service



What is Record Matching in the Payment Reconciliation Journal



How to Demo: Create and Manage Electronic Payments



How to Demo: Recognize Incoming and Outgoing Bank Payments in the Payment Reconciliation Journal



How to Demo: Use the Bank Data Conversation Service to Export Payments and Import Bank Statements



How to Demo: Handle payments with Payment Discounts in the Payment Reconciliation Journal



How to Demo: Recognize Incoming FIK Payments (DK Version)



How to Demo: Create and Manage Electronic Payments



How to Demo: Manage Electronic Payments That Have Previously Been Exported



How Do I Use the Bank Data Conversion Service to Export Payment Files and Import Bank Statement Files



How Do I Reconcile Incoming and Outgoing Bank Payments in a Payment Reconciliation Journal



How Do I Create and Manage Electronic Payments



What's new in *Microsoft Dynamics NAV 2015*

Social Listening

Your customers and stakeholders are talking about you somewhere on Facebook, Twitter, or blogs. How do you learn about it? Well, you can get powerful social insights by connecting Microsoft Dynamics CRM Online to Microsoft Social Listening. Microsoft Social Listening collects data from social media websites and presents it to you in easy-to-consume charts and graphs that you can use to spot emerging trends in people's comments, whether they're positive, negative, or neutral.

You can drill down into the data and see who is mentioning you, where they posted the comment, and exactly what they said. Armed with these insights, you can pinpoint what you're doing right, and address potential issues before bigger problems arise

With one of the first cumulative updates, Microsoft Dynamics NAV 2015 will include a control Add-in, which will enable you to embed cloud hosted services, like Microsoft Social Listening, into Microsoft Dynamics NAV pages

Supporting documentation

Coming soon:

How to integrate
MSL into Microsoft
Dynamics NAV 2015



What's new in *Microsoft Dynamics NAV 2015*

POWER BI

Microsoft Power BI for Office 365 is a collection of features and services that enable you to visualize data, share discoveries, and collaborate in intuitive new ways.

Self-Service BI features in Excel – such as Power Query, Power Pivot, Power View and Power Map – extend the data-specific features and capabilities of Excel 2013.

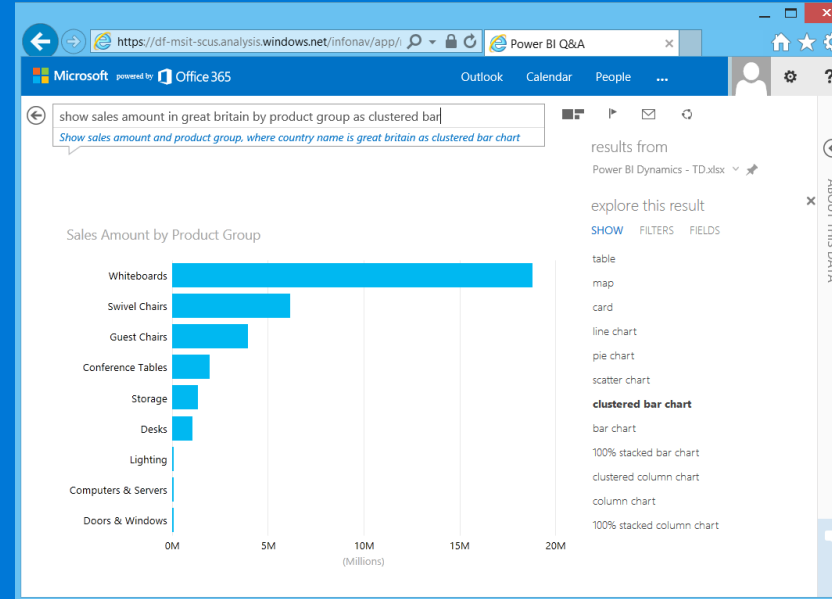
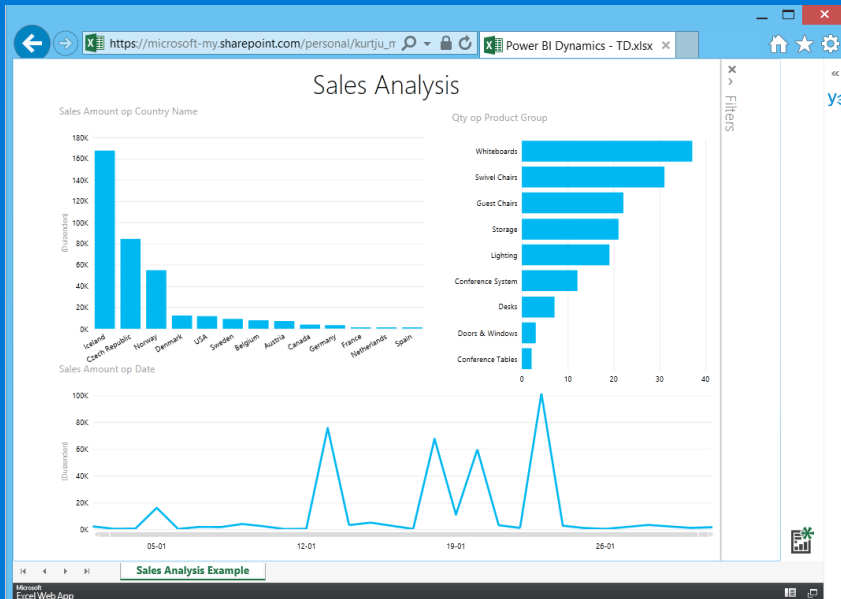
Through the use of ODATA web services, these Power BI features can integrate with data in Microsoft Dynamics NAV 2015. Visualizing and sharing your Microsoft Dynamics NAV data using Power BI will give you a better overview of your business and will result in better decision taking

Supporting documentation

How Do I Build a Power BI Dashboard in Office 365 with Microsoft Dynamics NAV 2015 Part I



How Do I Build a Power BI Dashboard in Office 365 with Microsoft Dynamics NAV 2015 Part II





Microsoft
Dynamics NAV

LEARN more at

<http://aka.ms/NAVGetReady>
